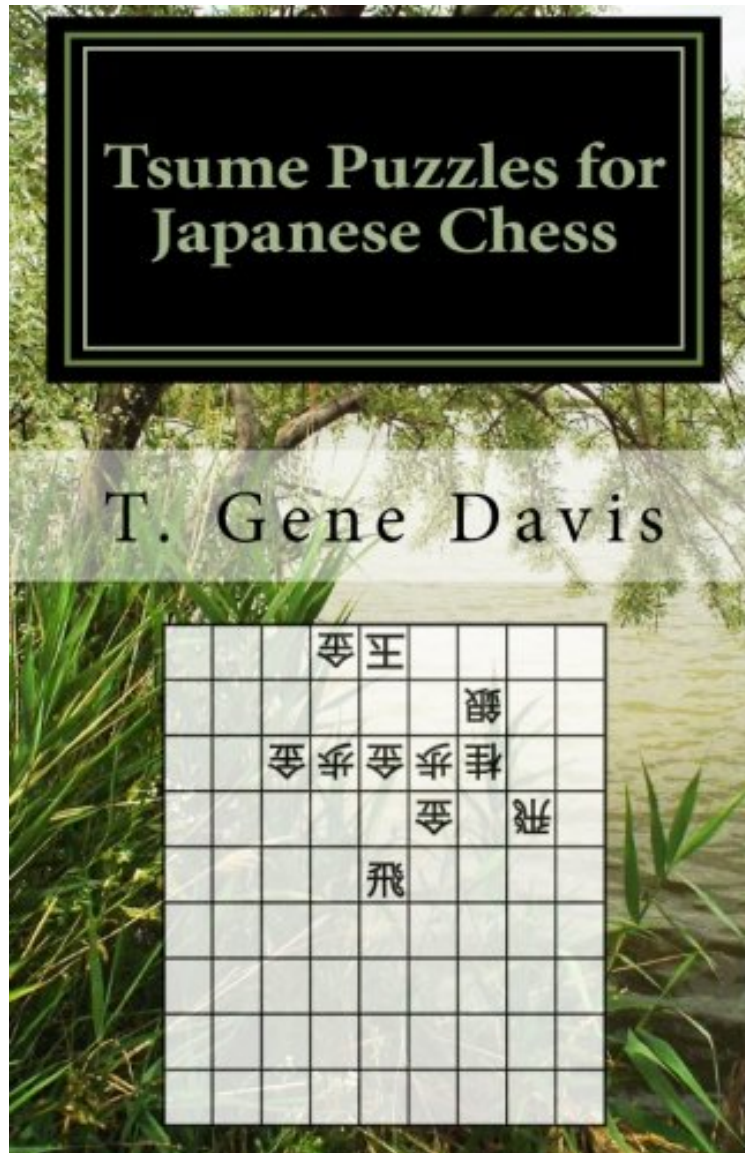


[Get free] Tsume Puzzles for Japanese Chess: Introduction to Shogi Mating Riddles

# Tsume Puzzles for Japanese Chess: Introduction to Shogi Mating Riddles

T. Gene Davis

ePub | \*DOC | audiobook | ebooks | Download PDF



[Download](#)

[Read Online](#)

#1454931 in Books T Gene Davis 2011-07-07 Original language: English PDF # 1 7.81 x .63 x 5.06l, .61  
#File Name: 146369055X278 pages Tsume Puzzles for Japanese Chess Introduction to Shogi Mating Riddles  
| File size: 45.Mb

**T. Gene Davis : Tsume Puzzles for Japanese Chess: Introduction to Shogi Mating Riddles** before purchasing it in order to gauge whether or not it would be worth my time, and all praised Tsume Puzzles for Japanese Chess: Introduction to Shogi Mating Riddles:

9 of 9 people found the following review helpful. Finally!!By hirohiigoIt's great to finally have a tsumeshogi book in English! The puzzles are very simple; flipping through it, I haven't found one that I couldn't solve at a glance. I think this would be a great book for beginners, which is a good thing since it's the only tsume book available right now in English. My only complaint is that Mr. Davis calls it "Japanese Chess" instead of shogi in the title.5 of 6 people found the following review helpful. Not Quite What Japanese Call "Tsume-shogi" But Is Good for Shogi BeginnersBy susumu-5Tsume puzzle is Japanese chess counterpart of checkmate puzzle in Chess, In Japan tsume books are often regarded as art works rather than practice drills. The standard to be recognized as good Tsume-shogi is a lot more complicated than what the tsume books in Japanese say. Tsume problem in Page 81 for instance, Japanese tsume books simply state one solution disregarding the other two which are too simple. As a Japanese I do not know the reason why. But the plausible answers could be one of the move must have "great one" not easily found. First half of the problems are a bit too easy for even kyu level Japanese chess players but as the moves become large-numbered it will be much more difficult.While the move difficulty is not that much, it may not be good for true beginners because the book gives only solutions and notcommenting enough why the particular solution is best. In Japanese tsume book almost one page is set aside for one to two tsume problems with comprehensive diagrams. For the next tsume book I suggest the author seek professional help from real Japanese tsume books writers for the quality of the problems as well as comprehensive comments with diagrams for kyu-level players.Verdict: Good workbooks of Japanese ChessRating: 80 out of 100. It needs a lot more comprehensive comments. Also the problems need technical "proofreading" to improve the quality of tsume problems.Recommended for Japanese chess fans3 of 3 people found the following review helpful. This isn't a bad book, but it's mainly just mating puzzlesBy Dale G.Most likely you're looking at this book because you are hurting for books on shogi in English. This isn't a bad book, but it's mainly just mating puzzles, which are easy enough to do even if you don't speak Japanese, and the book is not in English. But, still, this is a solid book of shogi puzzles, and it's nice not to struggle against the language barrier every once in a while.

Centuries before sudoku, crossword puzzles, or word searches challenged Western minds, Japanese military and royalty were creating and enjoying tsume puzzles. Tsume puzzles are mating puzzles for shogi (Japanese chess.) Shogi's history dates back 1000 years with archeological evidence that shogi existed in Japan at least by the 11th century. Some of the greatest know tsume puzzle books date back several centuries. Tsume puzzles have a long and honored tradition. Tsume are widely recognized to improve shogi skills. Tsume are also fun puzzles that anyone can enjoy. Whether your interest is in improving your shogi game, or just solving puzzles, this book provides many hours of entertaining shogi riddles. In this book you will find: \* A complete introduction with rules of tsume puzzles and shogi rules that apply \* Over 200 tsume puzzles of varying difficulty \* Puzzles ranging from one move to thirteen moves \* Solutions \* Explanatory notes to many solutions \* A quick reference section for those new to tsume and shogi