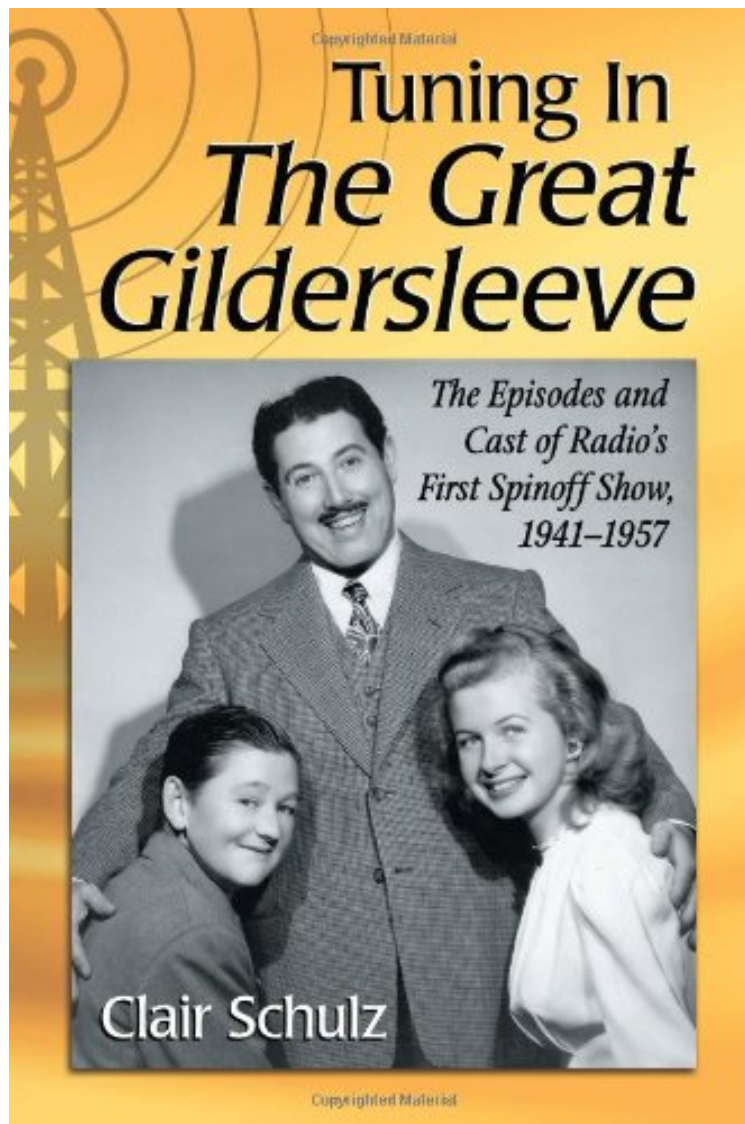


(Mobile pdf) Tuning in The Great Gildersleeve: The Episodes and Cast of Radio's First Spinoff Show, 1941-1957

Tuning in The Great Gildersleeve: The Episodes and Cast of Radio's First Spinoff Show, 1941-1957

Clair Schulz

ePub | *DOC | audiobook | ebooks | Download PDF



DOWNLOAD



+

READ ONLINE

#1907395 in Books McFarland 2013-01-18Original language:EnglishPDF # 1 8.90 x .80 x 5.90l, .70 #File Name: 0786473363236 pages | File size: 76.Mb

Clair Schulz : Tuning in The Great Gildersleeve: The Episodes and Cast of Radio's First Spinoff Show, 1941-1957 before purchasing it in order to gage whether or not it would be worth my time, and all praised Tuning in The Great Gildersleeve: The Episodes and Cast of Radio's First Spinoff Show, 1941-1957:

6 of 6 people found the following review helpful. Great resource and great commentary about a great show.By James

Keith This is a fantastic resource and a one of a kind treat for real Gildersleeve fans. What really sets this book apart is the summary of episodes not found anywhere else today. The only way this book could have been better is if it was longer. I really enjoyed the author's take on the show and I would have loved a more comprehensive analysis - not that the book feels incomplete, I just really wanted more of a good thing.

When Throckmorton P. Gildersleeve bade farewell to Fibber McGee and Molly and left Wistful Vista on a train in 1941, no one could have predicted that he would be riding the airwaves with his own new show until 1957. But when one listens to episodes of radio's first spinoff, it becomes clear the The Great Gildersleeve succeeded because its likable and amusing characters were appealingly fallible, much like the folks each of us knew in our hometowns. This book is a guide to more than 500 episodes of The Great Gildersleeve that are in circulation and also to the scripts of 46 episodes for which no recordings exist. Background on the development of the program is included, and the appendices include a list of episodes as well as information about cast members, notable occurrences on the program, ratings, and the films and TV series.

"one of those labors of love by a program fan and authority who has laboriously pulled together just about every available fact on the long-running program and its cast"--Communication Booknotes Quarterly; "Schultz expands previous works on the subject by providing insights on the groundbreaking show's development."--Reference Research Book News. From the Inside Flap When Throckmorton P. Gildersleeve bade farewell to Fibber McGee and Molly and left Wistful Vista on a train in 1941, no one could have predicted that he would be riding the airwaves with his own new show until 1957. But when one listens to episodes of radio's first spinoff, it becomes clear the The Great Gildersleeve succeeded because its likable and amusing characters were appealingly fallible, much like the folks each of us knew in our hometowns. This book is a guide to more than 500 episodes of The Great Gildersleeve that are in circulation and also to the scripts of 46 episodes for which no recordings exist. Background on the development of the program is included, and the appendices include a list of episodes as well as information about cast members, notable occurrences on the program, ratings, and the films and TV series. About the Author Clair Schulz served as the archives director at the Museum of Broadcast Communications and is the author of two books and numerous articles about old-time radio and vintage films. He lives in Muskego, Wisconsin.